

Team Brief

Your team represents members of an adventure group **Expeditions for All** which devotes its spare time to exploring remote areas of the world. This year the target is the Gozo Desert in north-west Africa. The ultimate destination of the expedition has not yet been decided but you have already chosen Hyla, on the western edge of the desert, as your base. Transport of expedition members and a specialised vehicle to Hyla has already been arranged.

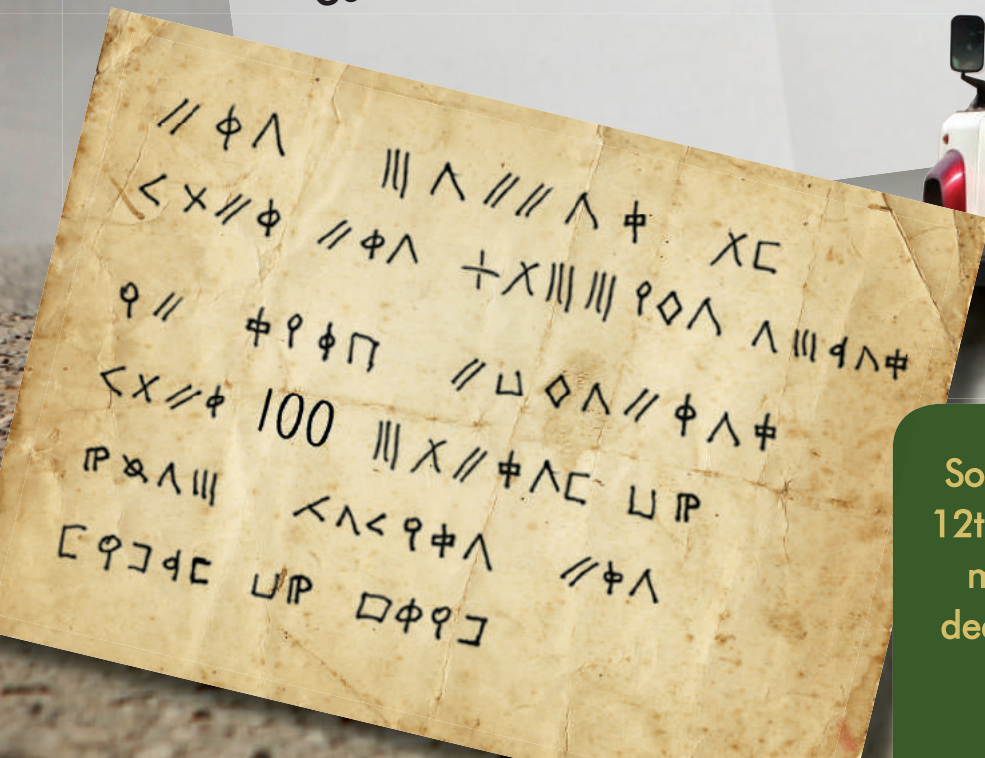
This was the situation two days ago. Today however you received a letter from a contact who has been on previous expeditions with your group and who is now in government. Apparently a letter containing information vital to the safety of a number of clandestine operatives is at a secret location in the Gozo Desert and must be retrieved.

A coded message revealing its exact location is given below. Your task, should you choose to accept it, is to break the code, identify the location, decide what equipment, supplies and fuel to carry and plan the best route there and back to Hyla.

If the letter is not back in Hyla within 12 days it is likely the information it contains will be too late to save the operatives.

You are due to leave next Monday at 0600 hours.

Good luck!



So far only the 1st and 12th words of the coded message have been deciphered. They read: *the and litres*



Possible candidates for the expedition



Bob Derby

Aged 51. Single. Spent 12 years in the Royal Marines (reached rank of major) before joining US oil company as a 'wildcatter' prospecting for oil. Has spent much of the past 20 years in the Middle East and speaks fluent Arabic. He has since been made redundant and has been unable to get another job.

Bob is also an experienced mountaineer with major climbs in the Alps and Patagonia under his belt. He is an assertive self-confident person who is never afraid to take command of a situation. He doesn't suffer fools gladly and can be overbearing.

To: Expeditions for all
Re: Gozo Desert Expedition

I am writing in application for membership of your expedition team to the Gozo Desert. I realise that I am older than many of your members, but I think my skills will prove necessary on such a trip, particularly if the Nakh Mountains are to be crossed. I am still very fit and am missing the more adventurous side of life. I expect to hear from you soon.

Major B Derby (retd.)



Sue Smith

Aged 43. Single. Sue is currently working as a librarian and is an acknowledged expert on Africa. She has a varied expedition record – three in total, including the South American rainforests and the Nigerian jungle. Since her last trip, 8 years ago, she has obtained an advanced first aid certificate.

She is a garrulous, robust person, always prepared to 'muck in' and give 100% effort.

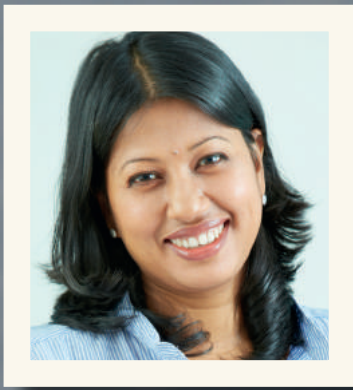
Dear Expeditions for all

I am writing to ask if I can join the expedition to the Gozo later this year. I know it's a while since I was last in the field and I'm neither as young nor as fit as I was, but I think I'll cope ok.

I would particularly like to go to the Gozo as I have never been on a long desert trip before and it would complete the set!

Cheers.

Sue Smith



Alisha Patel

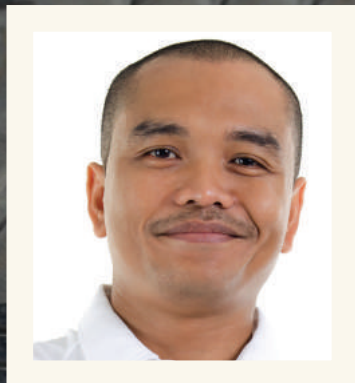
Aged 35. Married. Alisha has a BA in Modern Languages from Durham University. She has only recently joined the group Expeditions for All and has no previous experience except for camping which she loves. In fact she has not travelled much in spite of being a competent linguist. She has represented her country at orienteering and still competes in national and international events. Alisha is also in her own words a 'competent and adventurous cook'. Naturally modest Alisha fits in well with other members of the group.

Dear Expeditions for all

I'm applying to join this years expedition to the Gozo Desert even though I've only been a member of the group for four months. I know it's a bit of a cheek to expect to be accepted but it does sound exciting and I'd really like to do something exciting like this before I get too old.

Yours hopefully

Alisha Patel



Peter Chang

Aged 22. Single. Peter left school at 16 with no formal qualifications. He started as apprentice in a garage and is now a fully qualified motor mechanic. His main pastime and passion is rally driving and he has built his own car for the purpose.

He also plays squash, jogs and works out at his local gym.

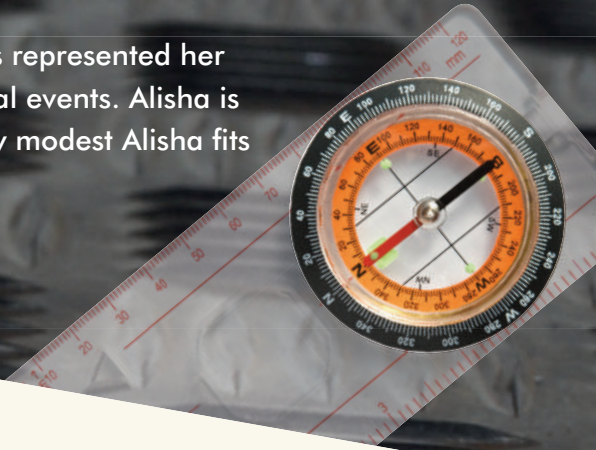
He has no expedition experience but played a major role in helping plan last year's expedition to the Gobi. Peter is a quiet thinking type who rarely overreacts and is good with logistical problems.

Dear Sir

I would like to go on this years expedition to the Gozo Desert. Last year I was involved in the planning of an expedition and I now feel that I am ready to have a go at the real thing. I want to go to the Gozo in particular as I'd like to have a go at driving in the Desert.

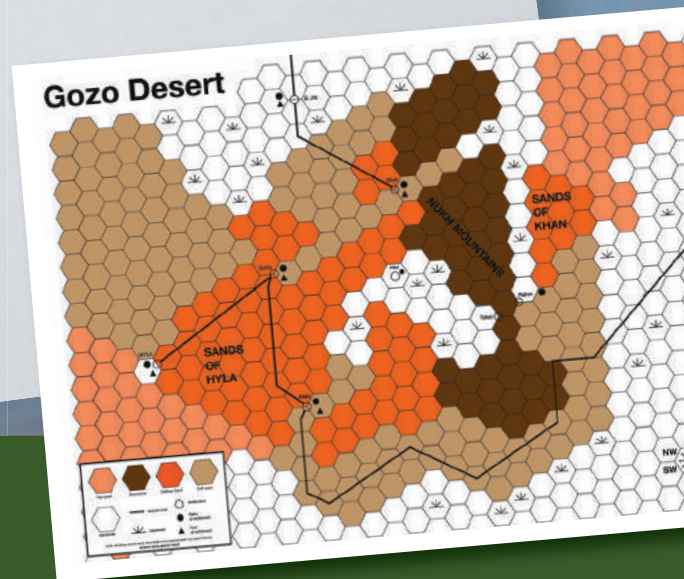
Yours Sincerely

Peter Chang



Some Important Points

1. You need to select a team of three for the expedition. You can pick members of your own team or from the list of volunteers (see over) or a mixture of both.
2. A specially converted fully serviced Land Rover will be used for the trip. You need to complete a checklist to identify the contents of your Land Rover. Write in the weight of each item and total them to give the overall weight. The optimum weight not to be exceeded at any time is 900 kilos.
3. The average weight of a fully-clothed person in the desert is 75 kilos.
4. A large part of the region is composed of high dunes of shifting sands which are impassable by vehicle except on the gravel tracks.
5. The Nukh mountains rise to 11,500 feet and cut the eastern desert off from the west. But in recent years it has been found that the mountains can be crossed by vehicle through a pass beyond Ghat. There is also a pedestrian route between Tahat and Rahm - one day's walk (9 hours) each way. Special packs are available at Tahat for carrying food and water along the route.
6. The Sands of Khan are an area of impenetrable dunes and swirling sandstorms which sometimes cause disruption across the savannah towards the Nukh Mountains.
7. You cannot take emergency supplies of food and water into account when planning your trip. They are for serious emergencies only and you cannot dip into these reserves.



YOUR TASK

To locate your destination and plan your trip. You must choose who will make up the team. Then you must review possible routes and decide on the one you will take. Be prepared to justify your choice and also explain clearly and with evidence why you rejected other potential routes. To help you pack your Land Rover you can use checklists (supplied).

Remember, the desert is a hostile environment and should be treated with respect.

