

CHINESE TOWER

團
隊
精
神

Team Brief



TEAM BRIEF

Your team has been asked by a customer to construct a sample of a tower. You start this activity with a total of 250 points. What points you do not 'spend' during the activity will be your final score. NB you can also lose points for shoddy constructions.

You lose one point for every minute you spend in the construction of the tower. This loss starts at the moment you collect the resources to build the tower. You can only use the resources given. Up to the time you physically collect the resources you lose no points.

So, if you collect your building resources at 10am and complete your tower at 10.25am you lose just 25 points from your 250 (if the tower is accurate and well-constructed).

You can of course spend some time planning before collecting your resources and do not lose points during this period.

Before collecting the resources (hidden at the start) you may send ONE member of your team to VIEW them and report back. This may help with your planning but costs 25 points per VIEW. So if, over the course of, say, 20 minutes' planning time, you send three different people - or the same person three times - to view the resources, you lose 75 points from your potential 250 points.

A description of what the customer wants is given opposite. Further information is available at a cost if you want it:

- Plans for the construction of the three shapes cost 75 points.
- Detailed instructions of the finished structure cost 100 points (available only if you have already bought the plans for the three shapes at 75 points).

Your objective is to build the tower and have a satisfied customer.



DESCRIPTION OF THE TOWER

Chinese towers have three parts.

Part 1 (the base) is four times as long as Part 2.

Part 2 is an 8cm cube. (If Parts 1 and 2 were laid end to end they would be the length of the straw). Part 2 stands on Part 1, and on top of Part 2 is Part 3.

Part 3 is a pyramid with a square base 8cm x 8cm from which four triangles, with sides 8cm long, fold up to a point.

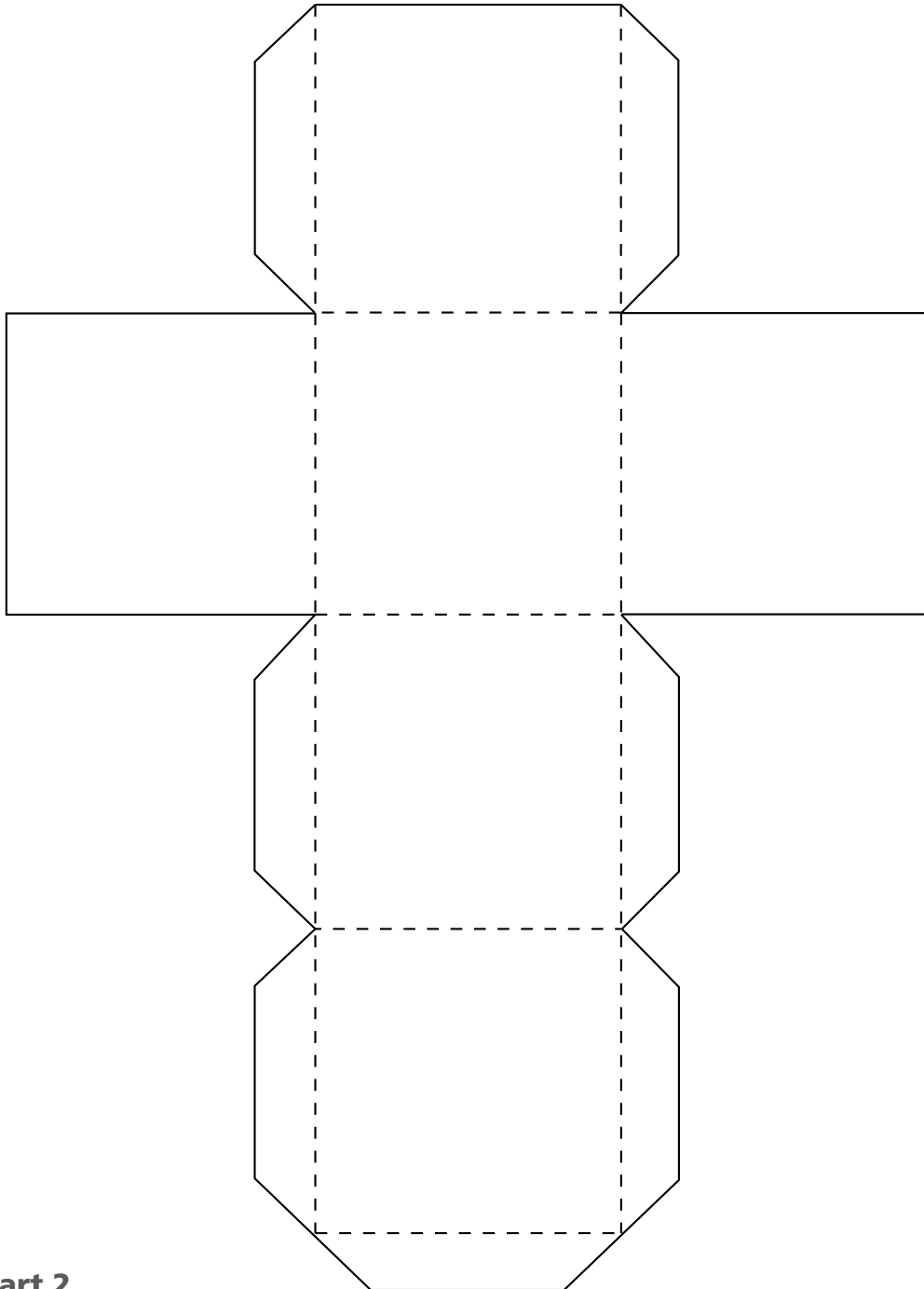
When constructing these parts don't forget to draw on flaps so when folded together the different bits of card make tight joins which help with the structural integrity and make for a neater job! Points are lost for a badly-made construction and the tower should please the customer.

Because this is the Year of the Chinese Worker the finished tower must have a small figure (made of card and approx 7cm high) balanced on the very top. Plans for the figure are available at a cost of 25 points.

措意

CHINESE
TOWER

EXTRACT FROM: 'PLANS OF THE THREE SHAPES'



Part 2

©Northgate Training Ltd ALL RIGHTS RESERVED. No part of Chinese Tower may be reproduced, transmitted transcribed, stored in a retrieval system or translated into any language in any form or by any means anywhere in the world without prior written consent of Northgate Training Ltd.

www.northgatetraining.co.uk